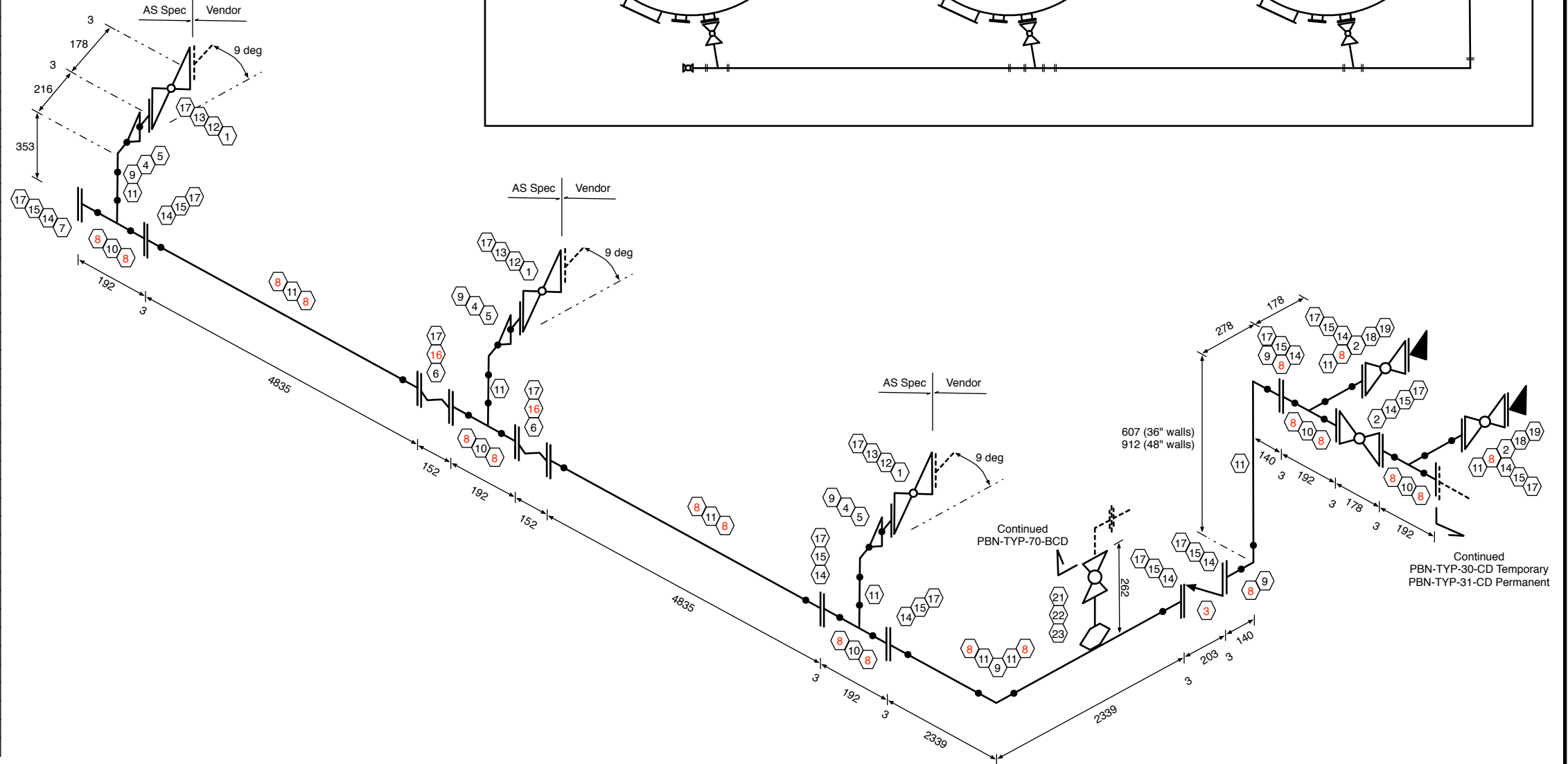
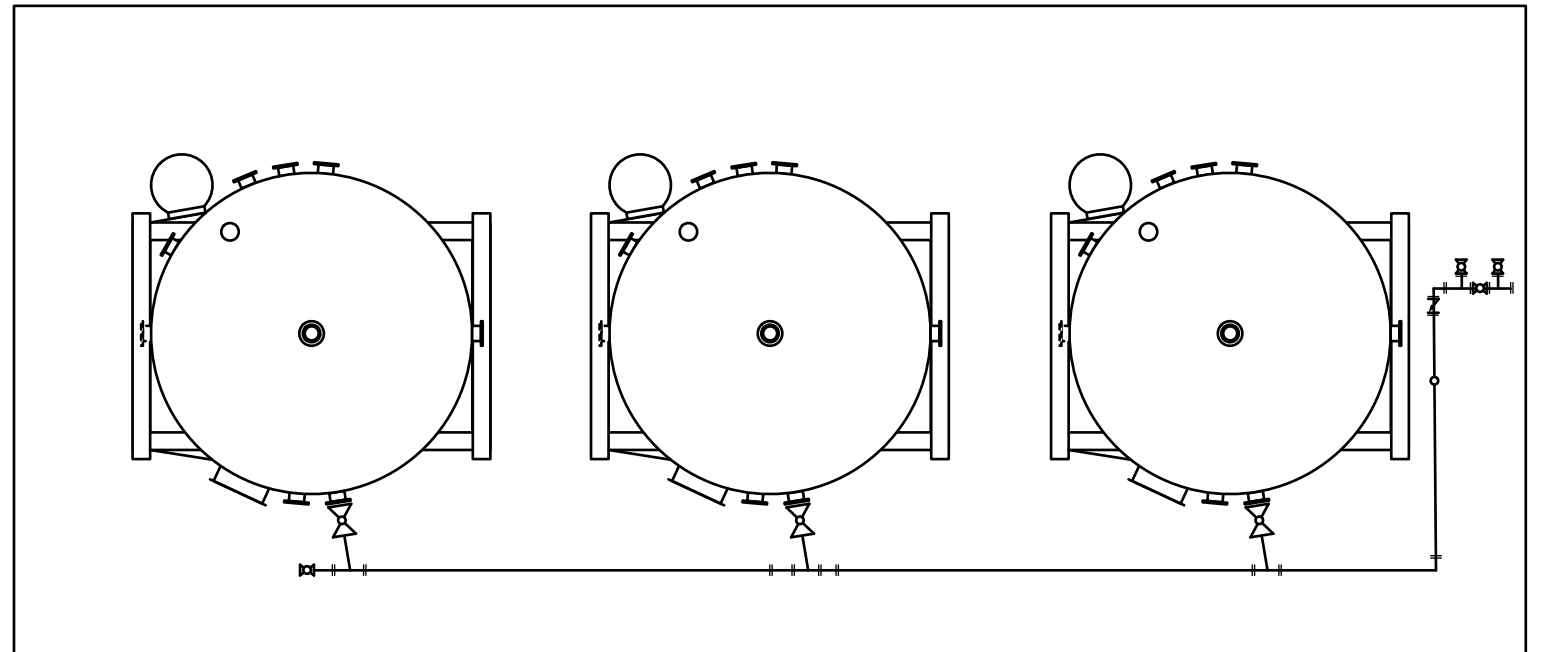
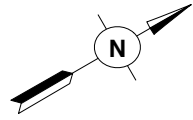


| BILL OF MATERIALS - AS Specification | | | | | |
|--------------------------------------|-----|----|-----------|---|----------|
| ID | QTY | NO | SCH/CLASS | DESCRIPTION | TAG |
| 1 | 3 | 89 | 150 ANSI | 3" 150 RF RP ball valve, sour, A105N | B01R2A |
| 2 | 3 | 60 | 150 ANSI | 2" 150 RF RP ball valve, sour, A105N | B01R2A |
| 3 | 1 | 60 | 150 ANSI | 2" 150 RF check valve, sour, A216-WCB | G01R2A |
| 4 | 3 | 89 | Sch80 | 3x2 weld concentric reducer, sour, SA-234-WPB | BW |
| 5 | 3 | 89 | 150 Sch80 | 3" 150 RFWN, sch80, sour, SA105N | RFWN |
| 6 | 2 | 60 | 150 ANSI | 2" 150 RF expansion joint, sour, H2S compatible | |
| 7 | 1 | 60 | 150 ANSI | 2" 150 RF blind flange, sour, SA-105N | RF Blind |
| 8 | 20 | 60 | 150 sch80 | 2" 150 RFWN, sch80, sour, SA-105N | RFWN |
| 9 | 6 | 60 | sch80 | 2" weld 90, sch80, sour, SA-234-WPB | BW |
| 10 | 5 | 60 | sch80 | 2" weld tee, sch80, sour, SA-234-WPB | BW |
| 11 | 4 | 60 | sch80 | 2" sch80 seamless pipe, sour, SA-106-B | SMLS |
| 12 | 6 | 89 | 150 CGI | 3" 150 CGI flex gasket, sour, ss inner ring | Spiral |
| 13 | 24 | | | 5/8 x 3 1/2 B7M studs | |
| 14 | 14 | 60 | 150CGI | 2" 150 CGI flex gasket, sour, ss inner ring | Spiral |
| 15 | 56 | | | 5/8 x 3 1/4 B7M studs | |
| 16 | 16 | | | 5/8 x 4 B7M studs | |
| 17 | 192 | | | 5/8 2HM nuts | |
| 18 | 2 | 60 | 150 ANSI | 2" 150 RFTH flange, sour, SA-105N | Scrd |
| 19 | 2 | 60 | 3000CL | 2" bull plug | Scrd |
| 21 | 1 | 33 | 2000 WOG | 1" RP ball valve, Scrd, Sour, A105N | B20T2A |
| 22 | 1 | 33 | XXS | 1x4 XXS nipple, Scrd, Sour, SA-106-B | Scrd |
| 23 | 1 | 60 | 3000 CL | 1on2 TOL, Sour, SA105N | TOL |



| REFERENCE DRAWINGS | |
|--------------------|------------------------------|
| DRAWING NUMBER | TITLE/DESCRIPTION |
| 400-BBI-SW | QAM Tank Schematic |
| PBN-TYP-30-CD | TEMP surface flowline ISO |
| PBN-TYP-31-CD | PERM subsurface flowline ISO |
| PBN-TYP-70-BCD | Flare/Recycle Line ISO |

| GENERAL NOTES | |
|---------------|--|
| | |

| DRAWING REVISIONS | | | | | | | |
|-------------------|----------------------|---------|----|----------|-----|-----|--|
| REV | REVISION DESCRIPTION | PROJECT | BY | DATE | CHK | APP | |
| A | ISSUED FOR APPROVAL | - | KM | 20130116 | | | |
| B | IFA revisions | - | KM | 20130201 | | | |

PROFESSIONAL STAMPS

ISSUED FOR APPROVAL

| PREPARED BY | | | |
|-------------|----|------|----------|
| DRAWN BY | KM | DATE | 20130116 |
| CHK'D BY | | DATE | |
| APPV'D BY | | DATE | |
| CLIENT APP | | DATE | |

| Typical SWB Tank Farm - Production Sour (Med, High) | | |
|---|----------------|------|
| SCALE | DRAWING NUMBER | REV. |
| | | B |